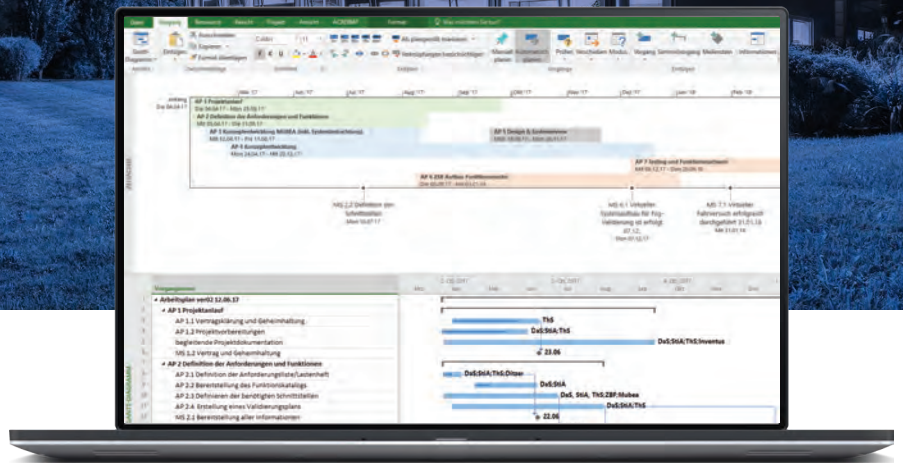


MUBEA automotive supplier for innovative chassis components

MindManager enables greater productivity and innovation in project planning, teamwork, and self-organization

Mubea



Results



GREATER SUCCESS

Increased personal productivity



PROJECTS AT A GLANCE

SWOT analysis and benchmarking



ALL-IN-ONE TOOL

Linking of personal and project-related tasks



EYE-CATCHING PRESENTATION

Map-based presentation with the ability to go in-depth on demand

"MindManager is the central tool for my projects. It not only accelerates the onboarding of team members, but also helps to avoid the loss of information because everybody knows what they must do."

Thomas Schrüllkamp
Head of R&D Chassis Systems
at Mubea Fahrwerksfedern GmbH

The Solution

At MUBEA, Schrüllkamp and his 60 colleagues use MindManager to develop new products. "We start with a blank map, in which, step by step, we develop the project and ultimately the product," he explains. "From brainstorming to scheduling to task distribution, we bring everything together in MindManager."

In addition to the visualization functionalities in MindManager, Schrüllkamp places great importance on a logical filing structure and meaningful naming of the many project-related files. He also uses MindManager to present project progress to managers and other key stakeholders. "This allows you to drill deeper into each individual aspect of the project, if necessary," explains Schrüllkamp.



Using the development of a roll stabilization system as an example, Schrüllkamp expands upon what this process looks like. This development project posed a challenge not only because of the complexity of the task but also because of the scope of systems and team members that had to be integrated. This was particularly challenging in the planning phase when you "literally sit before a blank sheet of paper and must define the objective from scratch."

Schrüllkamp managed this project planning stage as always by drawing up a map that everybody on the team can access. They established rules for how to conceive, plan, initiate and implement the project. Step-by-step, they developed tasks, timelines and defined milestones. "The success of all this was such that we now use MindManager even for our pilot production planning," says the project manager. But he emphasizes as well, that this process needs more than just a project map. Often, the filing system and network structure slip from focus. Therefore, he places great importance on file naming and on a clear and transparent filing structure to create a kind of knowledge pool that is accessible to everybody.

The Results

For Schrüllkamp, one thing is clear: he could not complete his tasks as a project manager in such a quick, agile and successful way if he did not work with MindManager. The software, and the mind mapping method, are pivotal elements of his projects, his teamwork and, his personal task management.

“With MindManager, meetings take on a different level of efficiency. You can quickly see and present the content, and show the results of previous meetings with the click of a button, making it easier to follow up and to advance topics,” says Schrüllkamp.

When working on new projects, the ability to present task schedules and timelines in a variety of diagram gives Schrüllkamp and his team the ability to quickly identify and eliminate bottlenecks at an early stage.

Finally, presentations are made much more efficient and effective with MindManager. Schrüllkamp particularly appreciates that everything can be shown in a single view: from a meta-level down to the smallest details. This makes it easier to get buy-in from all project stakeholders early on.

MindManager®

MindManager software helps individuals, teams, and enterprises do great work faster by simplifying the way they capture, organize, and share information.

Streamline how you and your team meet, collaborate and share. Get your free, full-feature 30-day trial today at:

www.mindmanager.com/myfreetrial



To see more MindManager customer case studies, visit www.mindmanager.com/customers

© 2020 Corel Corporation. All rights reserved. MindManager, the MindManager logo and Mindjet are trademarks or registered trademarks of Corel Corporation and/or its subsidiaries in Canada, the U.S. and elsewhere. All other trademarks mentioned here in are the property of their respective owners. www.mindmanager.com