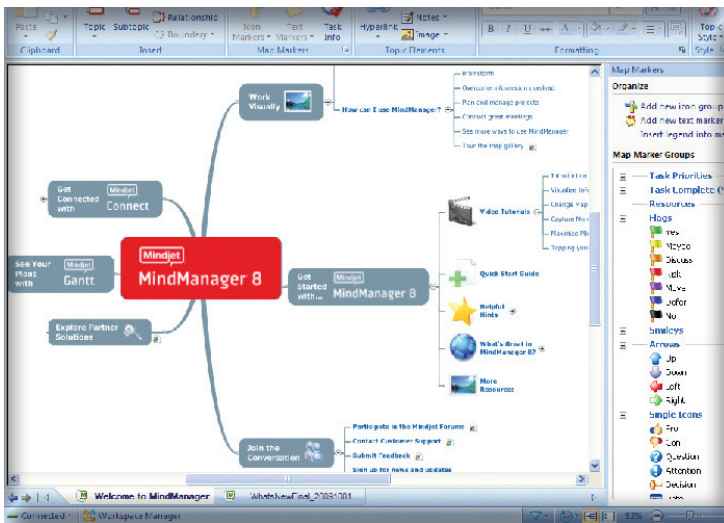




# MindManager® 8

MindManager 8 for Windows is a personal productivity solution that visually connects ideas, information, and people to help you save time, improve business processes, and drive innovation. MindManager lets you and your team work in real-time to organize, manage, and communicate ideas and information while solving real business problems.



## Visually Organize to Bring Clarity

- See the big picture as well as the details - Consolidate all the necessary information and ideas from people, websites, databases, and documents.
- Visualize every aspect of your project and filter only the information you need.

## Visually Manage More Efficiently

- Individuals and teams can manage information and work together more effectively by using a single tool to access, update, and capture thoughts and ideas.
- Link and layer images, lists, notes, data, charts, and files in any format—Word, Excel®, PowerPoint®, PDFs, Web content, and the like.
- Your map contains virtually every piece of pertinent information for any given project—all in one place.

## Visually Communicate to Create Alignment

- Produce more predictable results because everyone understands the big-picture.
- Communicate task requirements and priorities to team members.
- Keep decision-makers in the loop.

Achieve clarity, efficiency, and greater alignment for you and your team.

## KEY FEATURES

### Visual Mind Mapping

Unleash the power of your mind and use MindManager 8 to visually capture, organize, and connect ideas and information. Add images, hyperlinks, attachments, priority, and more to help you understand the structure, relationships, and importance of your information.

### Microsoft® Office Integration



Import and export Microsoft Office documents, including Word, PowerPoint, Visio®, and Project®. Link Excel files to topics. View and edit these files directly within MindManager.

### Microsoft Outlook®



Create new or import existing appointments, tasks, contacts, and notes with Microsoft Outlook directly from MindManager. Or send them to MindManager directly from Microsoft Outlook.

### Share Your Maps



Email a link to your map, post it on your blog or share it with your Facebook™, LinkedIn®, or Twitter™ networks. Recipients can either view your map in a browser, or copy it for their own use, if you choose. With Mindjet Player™, share your maps with everyone in dynamic Adobe® PDF or Adobe Flash® formats.

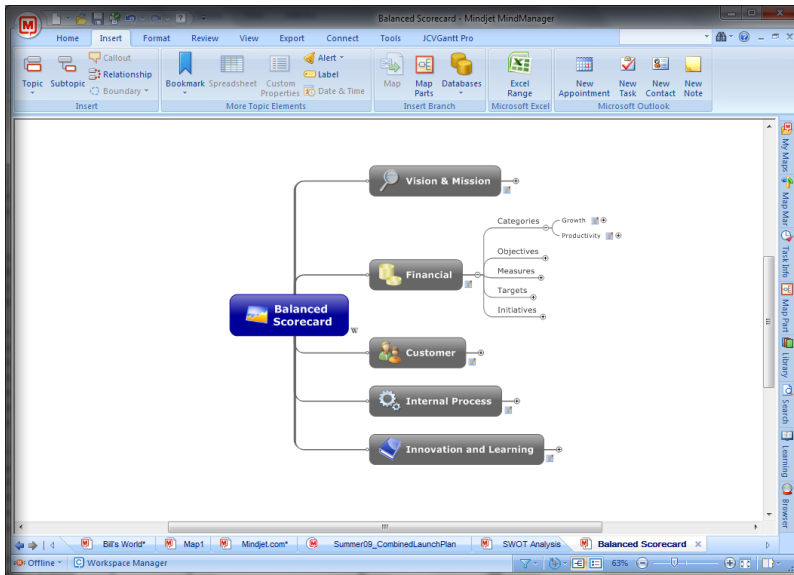
(Features Continued on Next Page)

Mindjet Corporation  
1160 Battery Street East  
San Francisco CA 94111 USA

www.mindjet.com  
Toll Free: 877-MINDJET  
Phone: 415-229-4200  
Fax: 415-229-4201

## Improve Your Business

- Manage information overload, increase productivity, and achieve greater alignment, and communication transparency throughout your organization.
- Improve your corporate processes, and visually document and implement best practices by using MindManager for sales methodologies, consultant engagements, management methodologies, project management, and more.



## Key Features Continued



### Web Integration

View web pages or applications, such as Google™ Docs, directly inside of MindManager using the embedded web browser. Map web searches from Google, Yahoo!®, and Microsoft, or map your social network from Facebook or MySpace™.



### Project Management

Manage your project from start to finish with MindManager's task automation, resource assignment, prioritization, and integrated support for Mindjet JCVGantt™ and Microsoft Project.



### Attachments/Hyperlinks/Notes

Attach or link a Word, Excel, PowerPoint, PDF file, or a web page to a topic - including documents from SharePoint® or Google Docs. Use the rich formatting capabilities of topic notes to add detailed content to your map.



### Map Filters/Search

Filter or search content based on map elements such as keywords, priority, flags, map markers, due date, completion %, resources, and more. Save your filters so that you can easily switch between your filtered map views.



# MindManager® 8

## Additional Features

- **Topic sorting**
- **Topic alerts**
- **Outline view**
- **RSS feeds**
- **VBA scripting**
- **Multi-map view and search**
- **Map password protection**
- **Review, presentation, and brainstorming modes**
- **Export as PDF, image, or web page(s)**
- **Mindjet Catalyst™ support**
  - **Simultaneous Co-editing of MindManager Maps**
  - **Full-featured Web Conferencing**
  - **Secure Workspaces for Storing Maps and Documents**

## SUPPORTED OPERATING SYSTEMS:

- Microsoft® Windows® 7 32-bit and 64-bit
- Microsoft Windows Vista® 32-bit
- Microsoft Windows XP SP3 32-bit
- Microsoft Windows Server® 2003 32-bit
- Microsoft Systems Management Server using Windows Server 2003 32-bit
- Citrix MetaFrame Presentation Server 4.5

## SYSTEM REQUIREMENTS:

- IBM or compatible Pentium® processor (700 MHz or greater)
- 512 MB RAM or greater
- 150 MB disk space and 50 MB more during installation
- SVGA (1024 x 768/16-bit color or greater)
- Microsoft .NET 2.0 or higher

## ADDITIONAL REQUIREMENTS TO USE CERTAIN FEATURES:

- Microsoft Office Professional 2002/XP, 2003 or 2007
- Microsoft Project® 2002, 2003 or 2007
- Microsoft Visio® Professional 2002, 2003, or 2007
- Microsoft Internet Explorer® 6.0 or greater
- Mozilla® Firefox® 3.0 or greater
- Adobe® Acrobat® 9.0 or greater
- Adobe Flash® Player 9 or greater
- Internet Connection