



MindManager

MapShare™

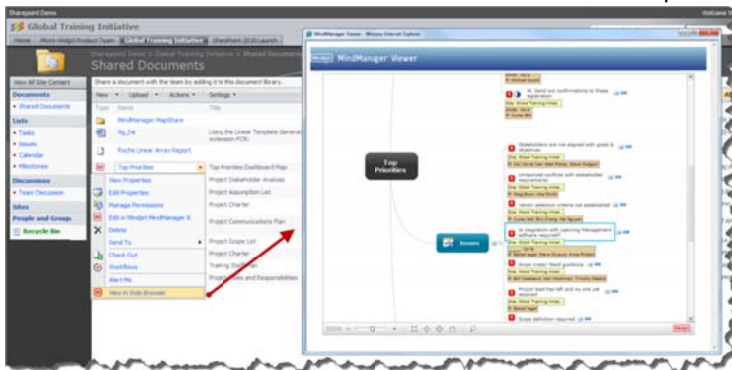
SharePoint® 2010 Installation Instructions

Introduction to Mindjet MindManager MapShare

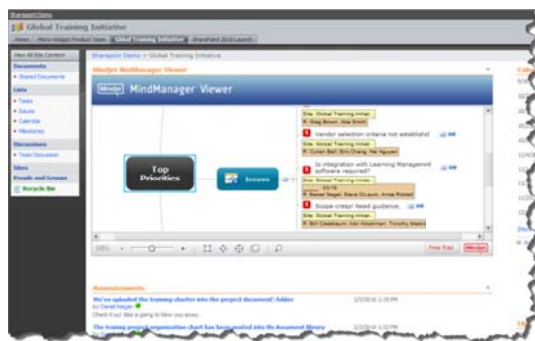
Mindjet's MindManager MapShare provides companies utilizing SharePoint the ability to view and display MindManager MMAP files directly within the SharePoint environment, without requiring any proprietary software installed on the individual user's local computer. In addition, you can configure your SharePoint server to allow MindManager users to edit MindManager MMAP files directly from SharePoint lists.

MindManager MapShare adds two distinct capabilities to your SharePoint environment:

- **MindManager MapShare Viewer:** Allows any users with access to SharePoint to view any MindManager MMAP file stored in a document list. Users can select *View in Browser* in the document list to view the selected MMAP file in the MapShare Viewer.



- **MindManager MapShare Viewer Web Part:** Allows a user with page edit privileges to add a web part to a SharePoint page that displays a MindManager map (the web part references a map file stored in a SharePoint document list and displays it in an embedded viewer in your SharePoint page).



Both the MindManager MapShare Viewer and MapShare Viewer Web Part feature the following:

- Expand/Collapse Map Branches
- View Notes
- Follow Hyperlinks
- Print
- Find
- Zoom



For more information about MindManager MapShare Viewer, including a description of functionality, please select **MindManager MapShare Viewer Help** on the viewer's bottom toolbar.



MindManager® MapShare: SharePoint 2010 Installation Instructions

MindManager MapShare adds integrated MindManager support for your SharePoint 2010 environment. Specifically, MindManager MapShare adds the following functionalities:

- Viewer: View any MindManager map (*.mmap or *.xmmap) stored in a document list
- Viewer Web Part: Display a specific MindManager map (*.mmap or *.xmmap) in a SharePoint page

MindManager MapShare consists of one Windows Solution file (WSP) that can be installed into SharePoint using basic STSADM operations.

Windows Solution File (WSP)	SharePoint Version	Features
Mindjet.SharePoint2010.ViewMap.wsp	2010	Viewer & Viewer Web Part

The package contains all the elements needed for the MapShare Viewer and the Web part to function correctly.

Prerequisites

MindManager MapShare requires the following for installation:

- That you have administrative privileges for the server(s) hosting SharePoint
- STSADM.exe is available on your SharePoint server. The default location for this utility is:

C:\Program Files\Common Files\Microsoft Shared\web server extensions\14\BIN\

Installation Steps

Complete the following steps to install MindManager MapShare into your SharePoint environment.



Note: if you have already installed a version of the MindManager MapShare on your SharePoint server, please use the upgrade instructions below..

Add the MindManager MapShare Solution Package to your SharePoint Server

1. Copy the WSP file into a folder on the Application server of your SharePoint server.
Example: C:\Mindjet
2. Open a command prompt window (on Windows Server 2008, make sure you open the command prompt as Administrator)
3. Change directory to the location of your STSADM utility
4. Add the Viewer/Viewer Web Part solution package (WSP) by executing the following command:

```
STSADM.exe -o addsolution -filename C:\Mindjet\Mindjet.SharePoint2010.ViewMap.wsp
```



Note: If you do not have SPTimer activated, you will see the following message after executing the above command: "The timer job for this operation has been created, but it will fail because the administrative service for this server is not enabled." This will



be addressed in the next step.

5. Run `execadmsvcjobs` to immediately process timer jobs to complete adding the solution to your SharePoint sever by executing the following command:

```
STSADM.exe -o execadmsvcjobs
```

Deploy the MindManager MapShare Solution Package

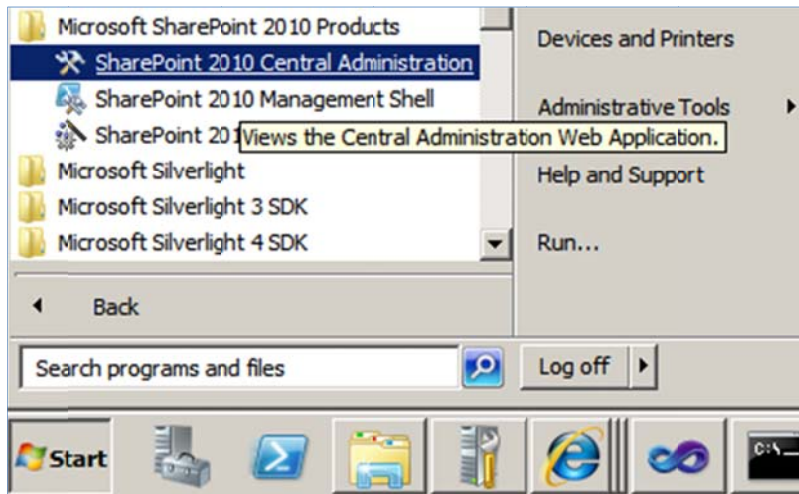
There are two methods to deploy the MindManager MapShare solution package:

- SharePoint Central Administration
- Command Line

Each has its own benefits; the Central Administration utility allows you to easily deploy the solution package to all SharePoint servers in a multi-server environment, whereas the command line approach allows administrators to write scripts.

This installation procedure will document using the Central Administration utility to deploy MindManager MapShare. For information regarding deploying a WSP via the command line, please read the following Microsoft TechNet article: [http://technet.microsoft.com/en-us/library/cc262459\(office.12\).aspx](http://technet.microsoft.com/en-us/library/cc262459(office.12).aspx)

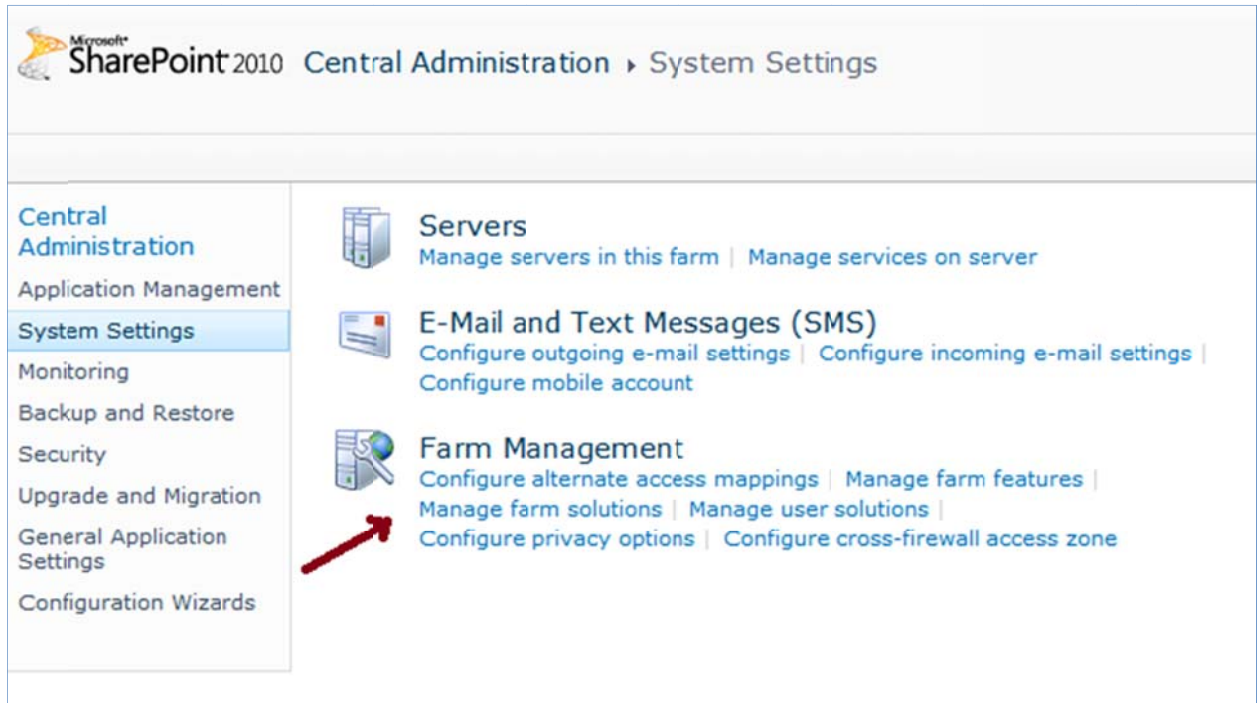
1. Open the SharePoint Central Administration page by selecting **SharePoint 2010 Central Administration** from the Start Menu.



2. Click on the **System Settings** link in the **Central Administration** page.



- Click the **Manage farm solutions** link.



Microsoft SharePoint 2010 Central Administration > System Settings

Central Administration

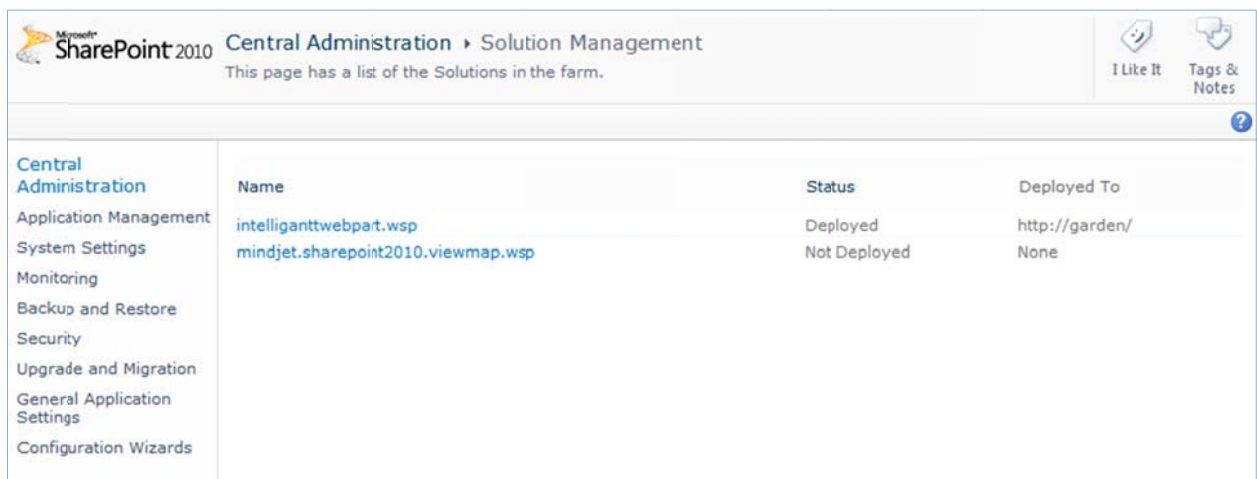
- Application Management
- System Settings**
- Monitoring
- Backup and Restore
- Security
- Upgrade and Migration
- General Application Settings
- Configuration Wizards

Servers
Manage servers in this farm | Manage services on server

E-Mail and Text Messages (SMS)
Configure outgoing e-mail settings | Configure incoming e-mail settings | Configure mobile account

Farm Management
Configure alternate access mappings | Manage farm features | **Manage farm solutions** | Manage user solutions | Configure privacy options | Configure cross-firewall access zone

- Click the **mindjet.sharepoint2010.viewmap.wsp** link.



Microsoft SharePoint 2010 Central Administration > Solution Management

This page has a list of the Solutions in the farm.

I Like It Tags & Notes

Name	Status	Deployed To
intelligentwebpart.wsp	Deployed	http://garden/
mindjet.sharepoint2010.viewmap.wsp	Not Deployed	None

5. Click the **Deploy Solution** link.

The screenshot shows the 'Deploy Solution' link highlighted with a red arrow. Below the navigation links, the following details are displayed:

Name:	mindjet.sharepoint2010.viewmap.wsp
Type:	Core Solution
Contains Web Application Resource:	Yes
Contains Global Assembly:	Yes
Contains Code Access Security Policy:	No
Deployment Server Type:	Front-end Web server
Deployment Status:	Not Deployed
Deployed To:	None
Last Operation Result:	The solution was successfully retracted.
Last Operation Details:	GARDEN : http://garden/ : The solution was successfully retracted.
Last Operation Time:	8/25/2010 9:54 AM

The Deploy Solution page will appear. The default settings will deploy the WSP to all SharePoint web application servers immediately. For other configuration options, please see your SharePoint documentation.

6. Click **OK** to deploy the mindjet.sharepoint2010.viewmap.wsp package.

The screenshot shows the 'Deploy Solution' dialog box in SharePoint Central Administration. The dialog is titled 'Central Administration > Deploy Solution' and includes the following sections:

- Solution Information:** Information on the solution you have chosen to deploy. Name: mindjet.sharepoint2010.viewmap.wsp, Locale: 0, Deployed To: None, Deployment Status: (empty).
- Deploy When?:** A timer job is created to deploy this solution. Please specify the time at which you want this solution to be deployed. Options: Now, At a specified time: 8/25/2010 11 AM 00.
- Deploy To?:** The solution contains Web application scoped resources and should be deployed to specific Web applications. Please choose the Web application where you want the solution to be deployed. Option: All content Web applications.

A warning message is displayed: "Warning: Deploying this solution will place assemblies in the global assembly cache. This will grant the solution assemblies full trust. Do not proceed unless you trust the solution provider." Buttons for 'OK' and 'Cancel' are at the bottom.

You will be returned to the Solution Management page.

Verify the Deployment

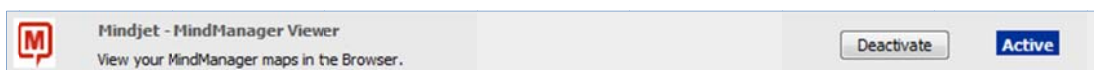
1. Open the site collection of your SharePoint environment using your browser.



Note: you may need to complete the steps below on **all** sites collections that you want the web part to be deployed in.

2. Select **Site Settings** from the **Site Actions** menu.
3. Click the **Site Collection Features** link in the **Site Collection Administration** section.

You should see the Mindjet – Map Open Menu and Mindjet – MindManager Viewer features listed and activated:



If these features do not appear activated, click **Activate**.

Configure the “Free Trial” button

The Mindjet.SharePoint2010.ViewMap.wsp file contains an xml file called FreeTrial.xml. After successfully deploying a WSP file to SharePoint, the FreeTrial.xml file will be located in the following version specific default directories:

C:\Program Files\Common Files\Microsoft Shared\web server extensions\14\TEMPLATE\LAYOUTS\Mindjet.

The FreeTrial.xml file contains a "Visible" element whose value controls whether or not the "Free Trial" button is visible in the MapShare Viewer. The two possible inner text values are true or false. The "Free Trial" button will appear in the MapShare Viewer by default. To hide it, change "Visible" setting to "false", and refresh the page the web part is installed on.

File associations with *.mmap and *.xmap files in SharePoint

A number of icons are installed with the Mindjet.SharePoint2010.ViewMap.wsp file, and are in the default install location: C:\Program Files\Common Files\Microsoft Shared\Web Server Extensions\12\TEMPLATE\IMAGES\MindjetViewMap. The "icon_document_mmap.png" file allows you to associate your SharePoint maps with the MindManager Desktop application.



Follow these steps to setup the file association:

- 1- Open the DOCICON.XML file from its default location: C:\Program Files\Common Files\Microsoft Shared\Web Server Extensions\14\TEMPLATE\XML
- 2- In the **<ByExtension>** section of the XML file, add the following 2 lines in the appropriate alphabetical order based on file extension:
`<Mapping Key="mmap" Value="MindjetViewMap\icon_document_mmap.png" OpenControl="" />`



- ```
<Mapping Key="xmmap" Value="MindjetViewMap\icon_document_mmap.png" OpenControl=""/>
```
- 3- Save the file, and restart IIS.

## Enabling the Edit in MindManager Feature

The [Edit in MindManager](#) feature of MapShare allows SharePoint users who have an installed copy of MindManager to check out maps from the SharePoint portal, edit them, and save the maps back to SharePoint. To enable this feature, please follow the steps below on the SharePoint Server. There are some prerequisites on the client side to make the feature functional.

### Client Prerequisites:

- The client and server should reside on the same domain
- SharePoint OpenDocument Class Active X version control should be installed on the client. Please consult with your System Administrators on how to get this component. This may require installation of MS Office 2007 or higher.
- If you access your SharePoint site using FQDN based URL, you should add the site to your "Local Intranet" sites. (See the [Know Issues](#) section later in this document).
- If you access your SharePoint site using FQDN based URL, you should add the site to your "Local Intranet" sites. (See the [Know Issues](#) section later in this document).

### Configure the SharePoint Server:

#### SharePoint Server configurations for MMAP file extension

In the "File associations with \*.mmap and \*.xmmap files in SharePoint" section add an entry for the Active X control needed to open the map in MindManager. The values in the DocIcon.xml should now look as below:

```
<Mapping Key="mmap" Value="MindjetViewMap\icon_document_mmap.png"
OpenControl="SharePoint.OpenDocuments"/>
<Mapping Key="xmmap" Value="MindjetViewMap\icon_document_mmap.png"
OpenControl="SharePoint.OpenDocuments"/>
```

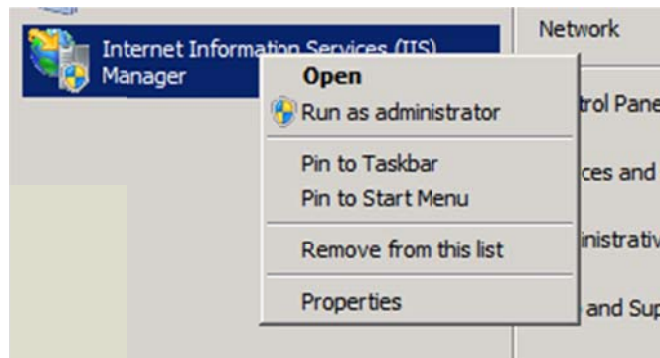
#### Web server (IIS) configuration for MMAP file extension

Add the following MIME type to IIS using the IIS Manager  
(Detailed steps follow for both IIS 7 and IIS 6.)

```
Extension: .mmp .mmap xmmap
MIME type: application/vnd.mindjet.mindmanager
```

#### Set up file extension for IIS 7:

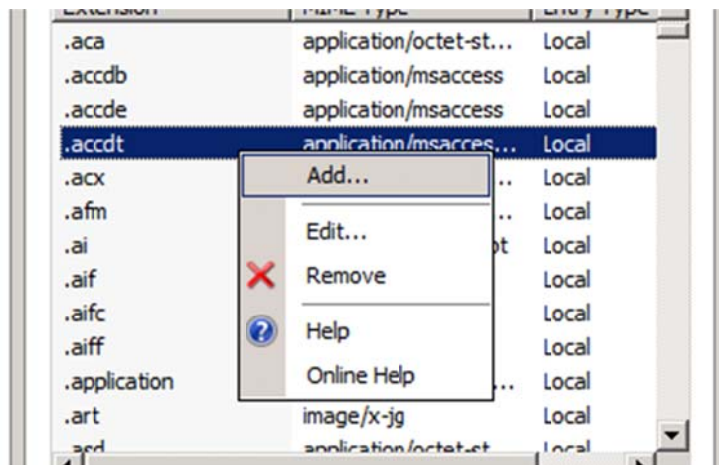
1. Open IIS Manager



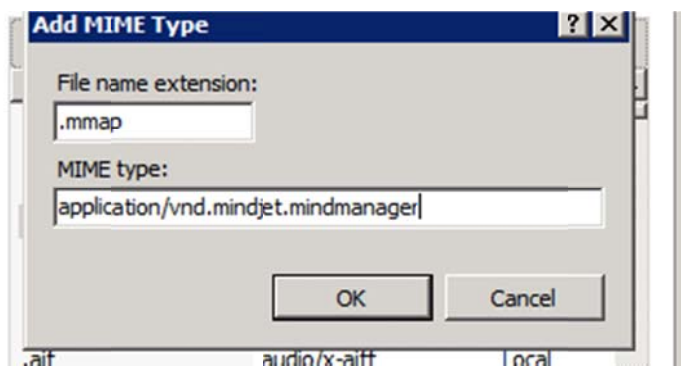
2. Select the host name, and then double-click **MIME types**.



3. Right-click in the list, and then click **Add**.



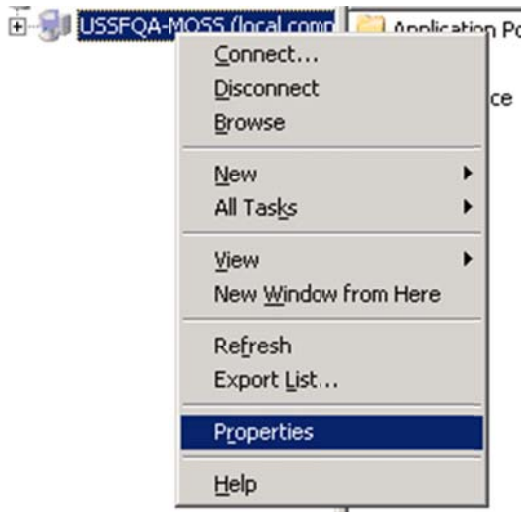
4. Add the entry as shown here, and then click **OK**.



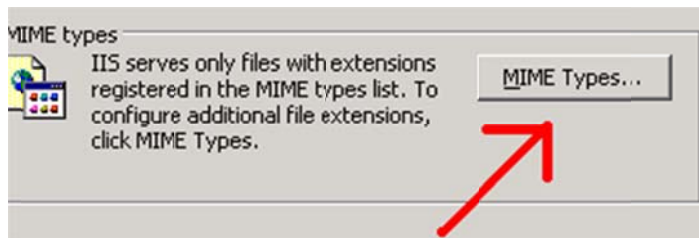
5. Repeat steps 3 and 4 for .xmmap extension.
6. Restart IIS.

### Set up file extension for IIS 6:

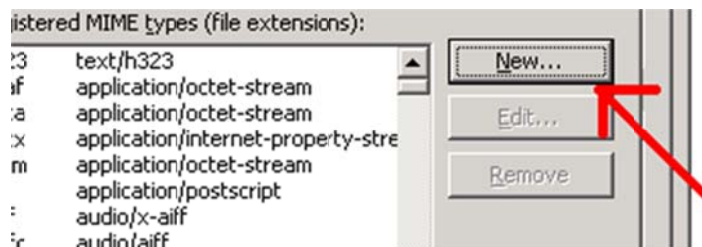
1. Click **Start, Administrative tools, IIS Manager**.
2. Select the host name, and then click **Properties**.



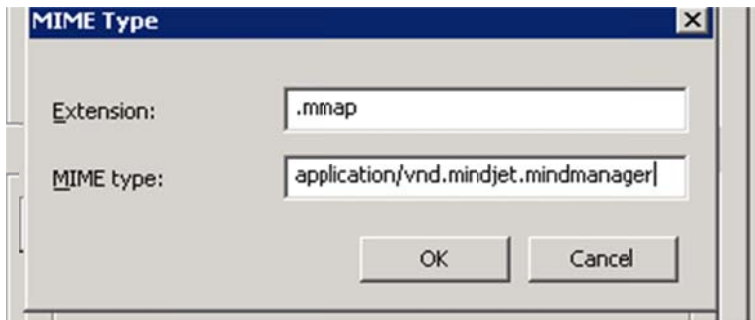
3. Click **MIME Types**.



4. Click **New**.



5. Add the entry as shown here, and then click **OK**.



6. Repeat steps 4 and 5 for the .xmmap extension.
7. Restart IIS.



Note: if the SharePoint server and the Windows Client are on separate Windows domains, make sure that the logged in account of the Client is added to the appropriate group(s) on the SharePoint sever, and a trust is set up between both domains. Consult your network administrator for instructions



## Upgrading MindManager® MapShare

To upgrade the MindManager MapShare to a new version, follow the steps below:

1. Copy the new WSP file into a folder on the Application server of your SharePoint server.  
Example: C:\Mindjet
2. Open a command prompt window (on Windows Server 2008, make sure you open the command as Administrator).
3. Change directory to the location of your STSADM utility.
4. Add the Viewer/Viewer Web Part solution package (WSP) by executing the following command:

```
STSADM.exe -o upgradesolution -name Mindjet.SharePoint2010.ViewMap.wsp -filename
C:\Mindjet\Mindjet.SharePoint2010.ViewMap.wsp -immediate -allowGacDeployment
```

5. Run `execadmsvcjobs` to immediately process timer jobs to complete upgrading the solution in your SharePoint sever by executing the following command:

```
STSADM.exe -o execadmsvcjobs
```

6. Restart IIS.

## User Documentation

The **Mindjet MindManager MapShare User Guide** is provided in English, French and German at the following locations:

English: [http://onlinehelp.mindjet.com/help/mapshare/enu/mapshare\\_user\\_guide.pdf](http://onlinehelp.mindjet.com/help/mapshare/enu/mapshare_user_guide.pdf)

French: [http://onlinehelp.mindjet.com/help/mapshare/fre/mapshare\\_user\\_guide.pdf](http://onlinehelp.mindjet.com/help/mapshare/fre/mapshare_user_guide.pdf)

German: [http://onlinehelp.mindjet.com/help/mapshare/ger/mapshare\\_user\\_guide.pdf](http://onlinehelp.mindjet.com/help/mapshare/ger/mapshare_user_guide.pdf)

It includes instructions for using MapShare features such as:

- Viewing maps from SharePoint lists
- Editing maps from SharePoint lists
- Using and customizing the MapShare Viewer Web Part
- Using the MapShare Viewer commands

When you deploy MapShare, you can make this document available to users by providing them with the link, or by downloading the document to your SharePoint site and informing them of its location.

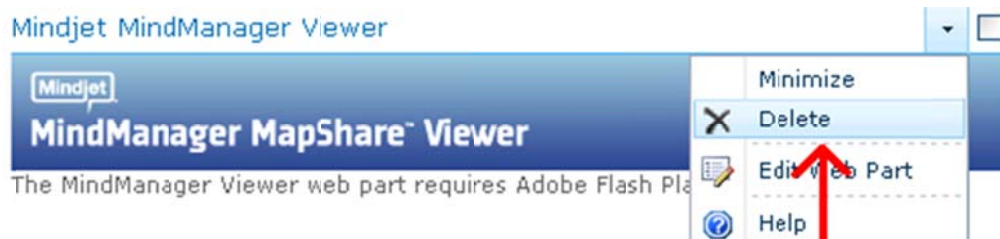
In addition, help for using the web part and the viewer commands is available from the Mindjet menu in the Viewer.

## Uninstalling MindManager® MapShare:

To uninstall MindManager MapShare from your SharePoint 2010 environment, follow the steps below:

### Remove all instances of the MindManager MapShare web part from all sites:

1. Login to the SharePoint site using your browser
2. On the page that contains the MapShare Viewer web part, click **Site Actions**, and then click **Edit Page**.
3. Right-click on the Web Part, and then click **Delete**.



4. Click **OK**, and save the page.

You will need to repeat this process for all the pages that contain the MapShare Web Part.

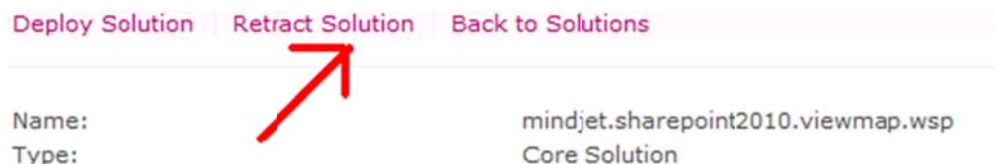
### Remove the MindManager MapShare web part from the sites collection gallery

1. Log in to the SharePoint root site using your browser.
2. Click **Site Actions**, and then click **Site Settings**.
3. Under **Galleries**, click **Web Parts**.
4. Select the **MindjetViewerWebPart** and click **Edit**.
5. In the pop-up window, click **Delete Item**.

### Undeploy the MindManager MapShare web part Solution

We will use the Central Administration utility to undeploy MindManager MapShare through the Deploy Solution page. Follow instructions in the [Deploy the MindManager MapShare Solution Package](#) section of this document for how to get to the page.

1. Click the **mindjet.sharepoint2010.viewmap.wsp** link.
2. Click the **Retract Solution** link.



3. Click **OK**



4. Open a command prompt window (on Windows Server 2008, make sure you open this window as Administrator).
5. Change directory to the location of your STSADM utility, and execute the following command:  
`STSADM.exe -o deletesolution -name Mindjet.SharePoint2010.ViewMap.wsp -override`
6. Once the first command completes, execute the following command:  
`STSADM.exe -o execadmsvcjobs`



## Known issues

### Accessing a SharePoint site with FQDN on Vista and Windows 7

When accessing the SharePoint site using FQDN URL, the "Edit in MindManager" feature may not work on Vista or on Windows 7, even if you have permissions to access the site.

The issue is thought to be a SharePoint issue, and documented in the following Knowledge Base article: <http://support.microsoft.com/kb/943280>.

Follow the steps below to make the feature work on Vista and Windows 7. These steps involve editing your registry, so please EXERCISE CAUTION. Make sure you back up the registry prior to making any changes.

1. Click **Start**, type **regedit** in the Start Search box, and then press ENTER.
2. Locate and then click the following registry sub key:  
**HKEY\_LOCAL\_MACHINE\SYSTEM\CurrentControlSet\Services\WebClient\Parameters**
3. On the **Edit** menu, point to **New**, and then click **Multi-String Value**.
4. Type **AuthForwardServerList**, and then press ENTER
5. On the **Edit** menu, click **Modify**.
6. In the **Value** box, type the URL (FQDN) of the SharePoint server, and then click **OK**.
7. Restart the **WebClient** service in Control Panel