



MindManager for SharePoint Site Configuration Guide

Addendum to the standard Large-Scale Deployment guide for configuring SharePoint sites

Overview

When deploying MindManager 8 for SharePoint, a SiteConnections configuration file can be specified in the installation package to pre-set SharePoint sites for the end-user in MindManager for SharePoint.

Procedure

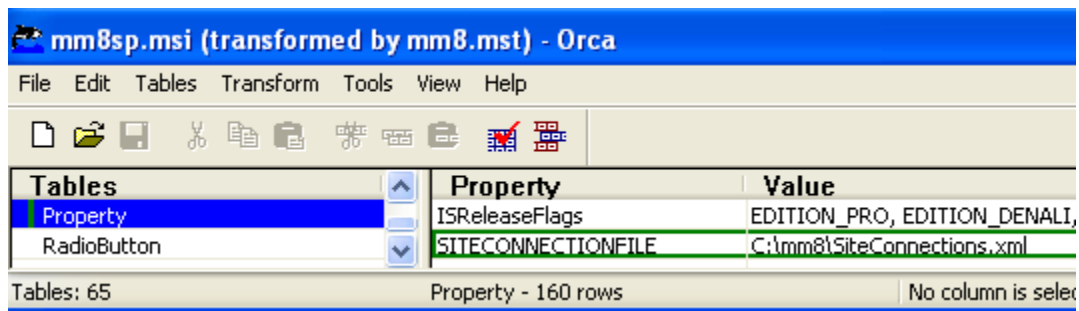
Administrators can pre-define SharePoint sites for the end-user when deploying MindManager for SharePoint by creating a SiteConnections XML configuration file and specifying the location of the file during the installation. After a successful installation, access to the SiteConnections XML file is no longer needed as the information is stored locally in the MindManager program directory.

During the deployment the location of the SiteConnections XML configuration file can be specified either via the command-line or by creating an .mst transform file for .msi package deployments.

Deploying the SiteConnections file path via .msi / .mst software deployment tools

It is also possible to specify the SiteConnections file path directly in a transform file (.mst) which can be used when rolling out the software via software deployment tools that can process standard windows installer packages (.msi)

The full path can be specified directly as a property called "SITECONNECTIONFILE" with the path as the value:



Deploying the SiteConnections file path via the command-line

When deploying the software via command-line the property SITECONNECTIONFILE="PathToFileToUse" can be added to specify the SiteConnections file path.

Example:

```
Msiexec.exe /i "C:\mm8\mm8sp.msi" /qn /L*v "C:\1-MM8sp-install.log"  
INSTALLDIR="%ProgramFiles%\Mindjet\MindManager 8" EULA_REGION="5" USERNAME="User"  
COMPANYNAME="MINDJET" SITECONNECTIONFILE=" C:\mm8\SiteConnections.xml"
```

Example XML SiteConnection files

Minimal configuration file:

This file demonstrates the minimal information you would need to provide for each site connection if you were manually creating a site connections file. All that is needed is a "DisplayName" and a "SiteUrl" for each connection. The other fields (that you see present in the second example) are created by MindManager.

```
<?xml version="1.0" encoding="utf-8"?>  
<SPSiteConnections xmlns:xsi="http://www.w3.org/2001/XMLSchema-instance"  
xmlns:xsd="http://www.w3.org/2001/XMLSchema">  
  <Items>  
    <SPSiteConnection>  
      <DisplayName>Example Company WSS Site</DisplayName>  
      <SiteUrl>http://wss.examplecompany.com/default.aspx</SiteUrl>  
    </SPSiteConnection>  
    <SPSiteConnection>  
      <DisplayName>MindJet SP Site</DisplayName>  
      <SiteUrl>http://MJsp01</SiteUrl>  
    </SPSiteConnection>  
  </Items>  
</SPSiteConnections>
```

Full configuration file:

This example contains a single site connection with all the fields that may be stored with a site connection.

```
<?xml version="1.0" encoding="utf-8"?>
<SPSiteConnections xmlns:xsi="http://www.w3.org/2001/XMLSchema-instance"
xmlns:xsd="http://www.w3.org/2001/XMLSchema">
  <Items>
    <SPSiteConnection>
      <Key>47ae69df-724c-4050-aa55-422ba75fabd3</Key>
      <DisplayName>Example Company WSS Site</DisplayName>
      <SiteUrl>http://wss.examplecompany.com/default.aspx</SiteUrl>
      <LastSuccessfulConnection>2010-04-09T14:32:47.5660859-07:00</LastSuccessfulConnection>
      <LastConnectionAttempt>2010-04-09T14:32:47.5660859-07:00</LastConnectionAttempt>
      <UpdateNameOnNextConnection>false</UpdateNameOnNextConnection>
      <ConnectionErrorDetails/>
      <LoginType>NotSpecified</LoginType>
    </SPSiteConnection>
  </Items>
</SPSiteConnections>
```

Description of each field in the site connections file:

- Display Name: Name displayed to user when referring to a SharePoint server.
- Site URL: URL of the SharePoint site. May be to a SharePoint root (http://root) or sub-site (http://root/subsite/).
- Key: The key is the GUID that uniquely identifies the site connection. When a site connection is associated with a map part this key is stored with the map part.
- Last Successful Connection: Date/Timestamp of last successful connection made to server.
- Last Connection Attempt: Date/Timestamp of last attempt to SharePoint server. If connection successful, attempt time will equal last successful connection time.
- Update Name on Next Connection: If this is set to "true", then the next time MindManager connects using this site connection's URL, the site connection's name will be changed to reflect the Site name stored in SharePoint.
- Connection Error Details: This field was added as a means to store the error information related to a failed connection – the field is currently not yet used.
- Login Type: This field is currently not in use.

Should you encounter any problems or need further help on deploying MindManager please contact Mindjet technical support directly at <http://www.mindjet.com/support>