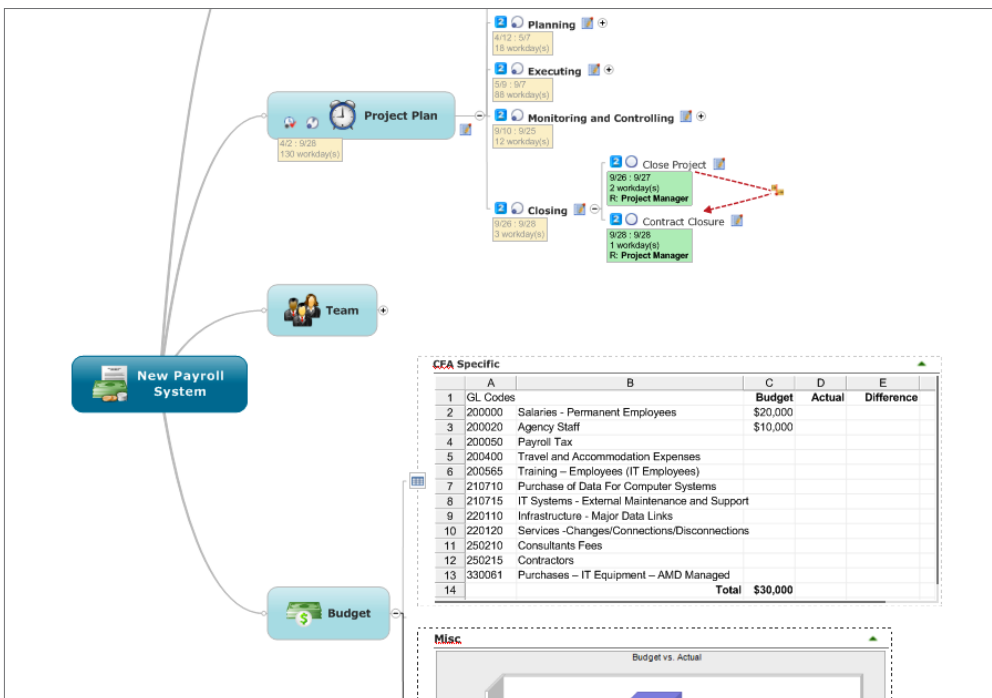


Data Sheet

Mindjet MindManager® 2012

MindManager enables individuals, teams, and businesses to capture, organize, plan and act on ideas and information in an interactive, visual environment.



Bring Clarity to Information and Communication

Improve your ability to assess ideas, analyze research, evaluate trade-offs, and communicate priorities using interactive information maps that illustrate the big picture yet contain all relevant details in a single view.

Create Blueprints for Action

Move quickly from concept to execution using built-in brainstorming, strategic planning, and project scheduling tools.

Engage and Align Team Members and Decision-makers

Empower teams to quickly reach a common understanding of issues, opportunities, and projects. Share maps and related files using Mindjet Connect®, the online service for content management, sharing and collaboration, accessible from within MindManager 2012.

Common Uses

- Brainstorming
- Project Planning
- Strategic Planning
- Task Management
- Preparing Presentations
- Meeting Management

Integrate With

- Microsoft® Outlook®
- Microsoft SharePoint®

Input From

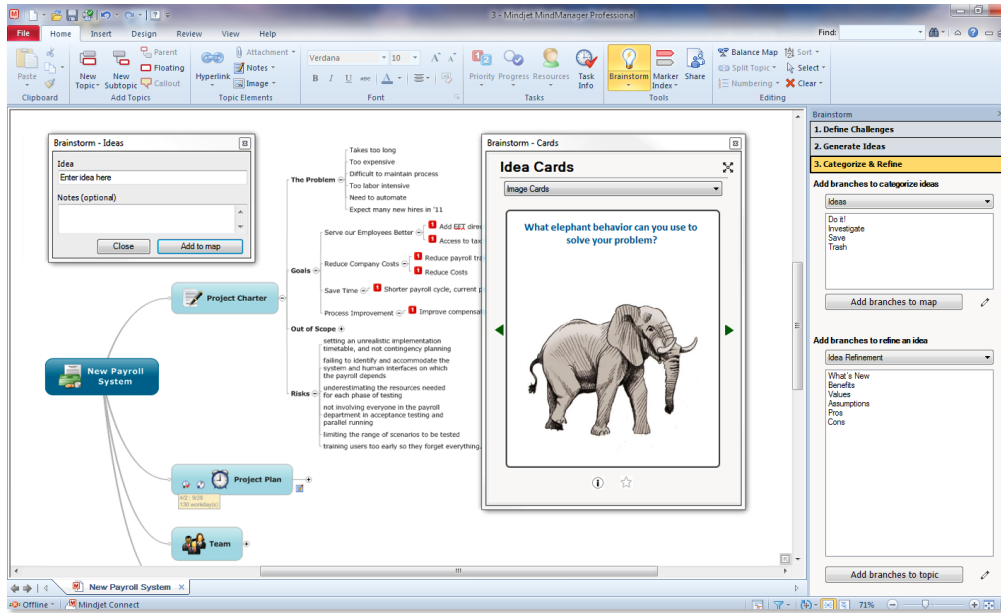
- Microsoft Word®
- Microsoft Project

Export To

- CSV File
- Microsoft PowerPoint®
- Microsoft Word
- Microsoft Project



Visually Connecting Ideas, Information and People™



Top Features

Information Mapping and More

Lay out goals, tasks, schedules, and strategic alternatives in a variety of visual formats, including information maps, outlines, Gantt charts, 2x2 analysis views, and organization charts, and indexed content lists.

Add Content and Context

Add multiple hyperlinks, attachments, notes, images, and spreadsheets to provide additional levels of details for your information map. Quickly drag and drop content to reorganize it and provide structure.

Create Ideas

Use an integrated brainstorming process to enhance the quality and quantity of ideas your team generates. Start the process by clearly defining your challenge. Generate new ideas by using a set of words, images and questions cards that spark the brainstorming process. Finally, categorize, sort and refine your ideas.

Analyze Alternatives

Make better decisions by prioritizing and categorizing your mapped topics using the new Analysis View. This allows you to move topics into a predefined series of 2x2 analytics charts. Standard charts include Cost vs. Opportunity, Urgent vs. Important, SWOT and others.

Mindjet, MindManager and Mindjet Connect are trademarks of Mindjet, registered in the US and other jurisdictions. Microsoft, Outlook, SharePoint, Microsoft Word, PowerPoint, Windows, Windows Vista, Windows XP, Microsoft Office and Internet Explorer are trademarks of Microsoft Corporation, registered in the US and other jurisdictions. IBM; Intel and Pentium; Mozilla and Firefox; Google Chrome; and Adobe, Acrobat and Flash are registered trademarks of International Business Machines Corporation, Intel Corporation, Mozilla Foundation, Google Inc. and Adobe Systems Incorporated, respectively, registered in the US and other jurisdictions.

Project and Task Management

Assign key task information such as priority, assigned resource, duration and percent complete to tasks. The results can be viewed either as an information map or a Gantt chart with all of the key dependencies highlighted. Use task filters to highlight task due dates or other critical milestones.

Information Map Presentations

Showcase your ideas and increase engagement using MindManager's automated presentation view or customizable slide shows. With MindManager's dynamic presentations, you'll easily tailor the level of details presented for each audience and capture critical feedback right in the presentation.

Mindjet Connect

Integration with Mindjet Connect gives you anytime, anywhere access to your maps, along with the ability to share maps and other files. You can invite anyone to view, edit and co-edit your maps—your "guest" editors don't need to purchase any software to interact with your maps. Mindjet Connect is free and can be accessed right from within MindManager.

Supported Operating Systems

- Microsoft Windows® 7 32-bit and 64-bit* (includes Service Pack 1, February, '11 release)
- Microsoft Windows Vista® SP2 32-bit
- Microsoft Windows XP® SP3 32-bit

System Requirements

- IBM® or compatible Intel® Pentium® processor (1 GHz or greater)
- 1 GB RAM or greater
- 300 MB disk space
- SVGA (1024 x 768/16-bit color or greater)
- Microsoft .NET 3.5 or higher

Additional Requirements to Use Certain Features

- Microsoft Office® Professional 2003, 2007, or 2010
- Microsoft Project 2003, 2007, or 2010
- Microsoft Internet Explorer® 7.0 or greater
- Mozilla® Firefox® 3.5 or greater
- Google Chrome™ 8.0 or greater
- Adobe® Acrobat® 9.0 or greater
- Adobe Flash® Player 10 or greater
- Internet Connection

*Microsoft Office 32-bit version recommended