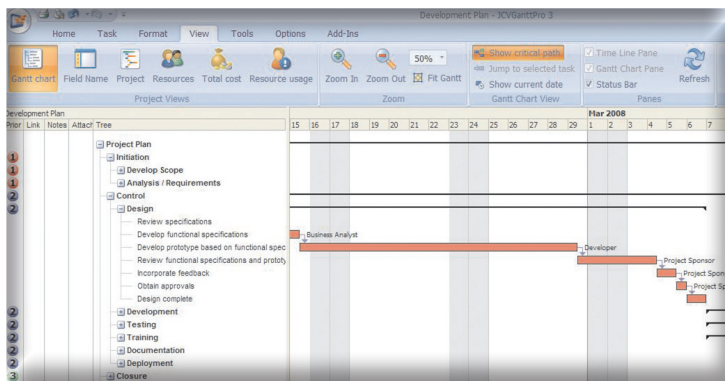


Mindjet JCVGantt™

Mindjet JCVGantt simplifies your project management process by removing the complexity and letting you focus on what matters most. You can track project status, monitor resource assignments, estimate time and costs, identify key milestones, and manage the overall execution of your project.

Benefit from the ultimate visual project management solution by combining Mindjet JCVGantt with MindManager® for Windows. Use MindManager to formulate your strategy, gather stakeholder input, and define critical project activities. Once you have initiated the planning and development stage, Mindjet JCVGantt's dynamically linked charting lets you manage project timelines and deliverables to ensure that your project gets done on time and within budget.



Accelerate Project Planning Processes

- Improve brainstorming, task assignment, and knowledge transfer by synchronizing projects with MindManager.
- Calculate total project costs and instantly identify a project's critical path.

Win New Business Faster

- Capture customer requirements, assign internal resources, generate proposals, and gain approval.

Engage Stakeholders and Customers

- Foster active participation by engaging in stimulating real-time interactions.
- Breakdown and define complex projects to build accurate schedules.

Improve Customer Relationships

- Develop and share project plans that emerge from iterative processes with customers and partners.
- Solidify business agreements by capturing relevant and accurate information in visual maps.

The Ultimate Visual Project Management Solution

KEY FEATURES

MindManager 8 for Windows Synchronization

Brainstorm all tasks in MindManager and watch them instantly synchronize in Mindjet JCVGantt. Leverage MindManager to define the project and JCVGantt to track and manage execution.

Gantt View

View your project's work breakdown structure (WBS) in an interactive Gantt chart, allowing you to analyze your project's phases, dependencies, and progress quickly and efficiently. Manage resource assignments, notes, and attachments directly from within your Gantt view.

Gantt Parts™

Save time by re-using project and resource information you've already entered for your last project and jump-start scheduling with drag and drop Gantt Parts.

Task Info Pane

Build schedules easier with the floating task pane. It lets you quickly enter task priority, date information, duration, percent complete, and resource assignments.

Calculate Costs

Calculate variable resource costs in real-time as the task duration increases and decreases in the Gantt chart.

User Sheets

Add ad-hoc, customizable spreadsheets to your project schedule and take advantage of many Microsoft® Excel® compatible functions.

Mindjet Corporation
1160 Battery Street East
San Francisco CA 94111 USA

www.mindjet.com
Toll Free: 1-877-MINDJET
Phone: 1-415-229-4200
Fax: 1-415-229-4201

KEY FEATURES CONTINUED

Critical Path

Identify the project's critical path and mitigate potential risks.

Hand-Write Your Project

Use your Tablet PC stylus to enter an entire project plan without ever using a keyboard. All project tasks and resource information supports the "ink" and "task note" feature allowing you to scribble notes or drawings related to each task.

Resource Pooling

Assign the same group of resources to multiple projects. Track all task assignments for each resource so that you can determine whether someone is under-allocated or overloaded with work.

Intelligent Calendar

Take advantage of intelligent dependency calculations to plan around non-work days like holidays, weekends and sick days.

Baseline Snapshots

Spot budgetary issues before they escalate into big problems. Take Baseline Snapshots to support your own risk analysis.

Define your Plan with MindManager

Total cost					
	A	B	C	D	E
1		Total cost			
2			Fixed	Variable	
3		Training	\$0.00	\$20300.00	
4		Documentation	\$0.00	\$30850.00	
5		Deployment	\$0.00	\$15000.00	
6					
7		Subtotals:	\$0.00	\$66150.00	
8					
9		Total Project Cost:	\$66150.00		
10					
11					
12					
13					
14					
15					
16					

Calculate your Total Project Cost

SUPPORTED OPERATING SYSTEMS:

- Microsoft® Windows Vista® Ultimate and Business
- Microsoft Windows® XP Professional, Home or Tablet PC Editions
- Microsoft Windows® Server 2003

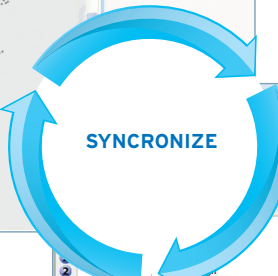
SYSTEM REQUIREMENTS:

- IBM or compatible Pentium® III processor (800 MHz or greater)
- 128 MB RAM or greater
- SVGA (800x600 or greater) with 256 colors (1024 x768 with 16-bit color recommended)

ADDITIONAL REQUIREMENTS TO USE CERTAIN FEATURES:

- Mindjet MindManager Pro 7 or higher
- Microsoft® Office 2002, 2003 or 2007
- Microsoft Project® 2002, 2003 or 2007

Manage your Project Schedule with Mindjet JCVGantt



Development Plan - JCVGanttPro 3